



Our Approach to Ecology

The Issue

In remediating sites for our Clients, EDSR has seen the rise in the importance of Ecology, at legislative, public and corporate conscience levels. This has become a major factor impacting the duration of remediation projects and the disposal of redundant assets.

The identification of all species of flora and fauna present, and particularly protected species, can only be carried out at certain times of the year. Such surveys, coupled with obtaining licences (to provide new habitats for temporary or permanent relocations) can have serious impacts on the time available for remediation programmes and therefore the ultimate site disposal or re-development.

The Objective

EDSR carries out Stage 1, surveys to identify the likely species of flora and fauna present on a site. Where species are suspected but not proven by the Stage 1 survey, specific detailed surveys are established, for example, night time monitoring for bats using radar equipment. Detailed surveys (Stage 2) for individual species identified are subsequently undertaken.

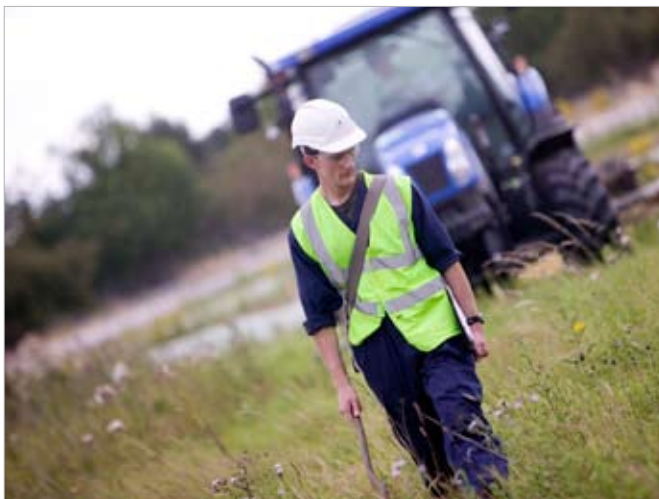
When all the surveys have been carried out a detailed ecological picture of the species present and population sizes will have been compiled. This can have a six to nine month window, as certain species can only be detected when active in spring and summer.

The EDSR Solution

With all the data gathered on population sizes, the impact of any remediation works required can be determined. EDSR assesses this impact in conjunction with the client and the regulating authorities.

Having determined the impact of the remediation works upon the ecological setting of a site, EDSR establishes any works of mitigation required to be undertaken in either working around the ecological issues on a site, or as happens in most cases, provides additional ecological environments to compensate for any temporary or permanent loss of habitat due, to site activities. Such works of mitigation are agreed with the regulating authorities and appropriate permissions or licences obtained.

The works of mitigation are designed to satisfy both client and regulating bodies, with the aim of increased bio-diversity i.e. the works of mitigation provide an improved environment for the flora and fauna than previously existed.



For more information please contact:

EDSR Group, Victory House, Quayside, Chatham Maritime, Kent ME4 4QU
Innovate Office, 4100 Park Approach, Thorpe Park, Leeds LS15 8GB
Telephone: 01634 525150 Fax: 01634 891102 Internet: www.edsr.co.uk